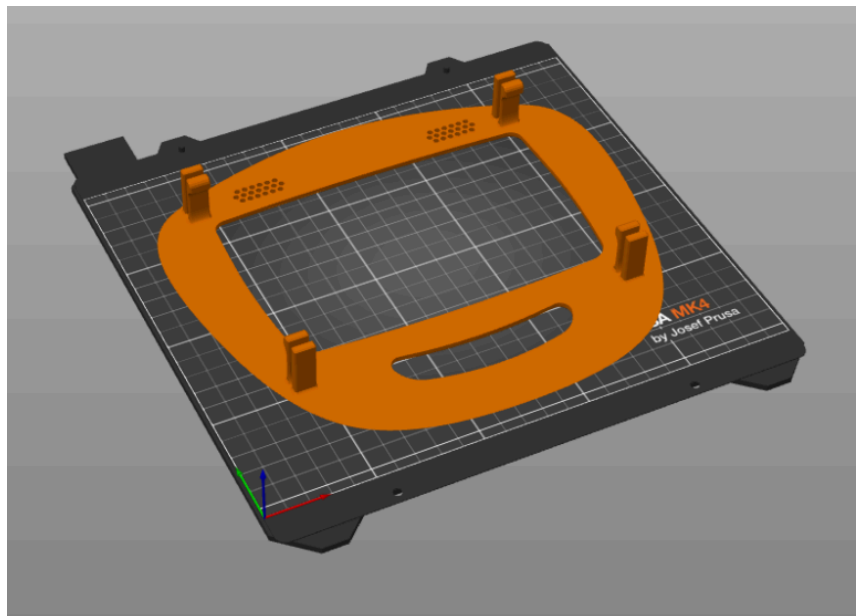


Face

A03-Face-Plate

Suggested layer height	0.2 mm
Suggested infill percentage	40%-50%
Supports	None
Number of this part for one arm Pib	1
Number of this part for two arm Pib	1
Mass – (Mass with supports)	62 g
Printing time	2h 30min

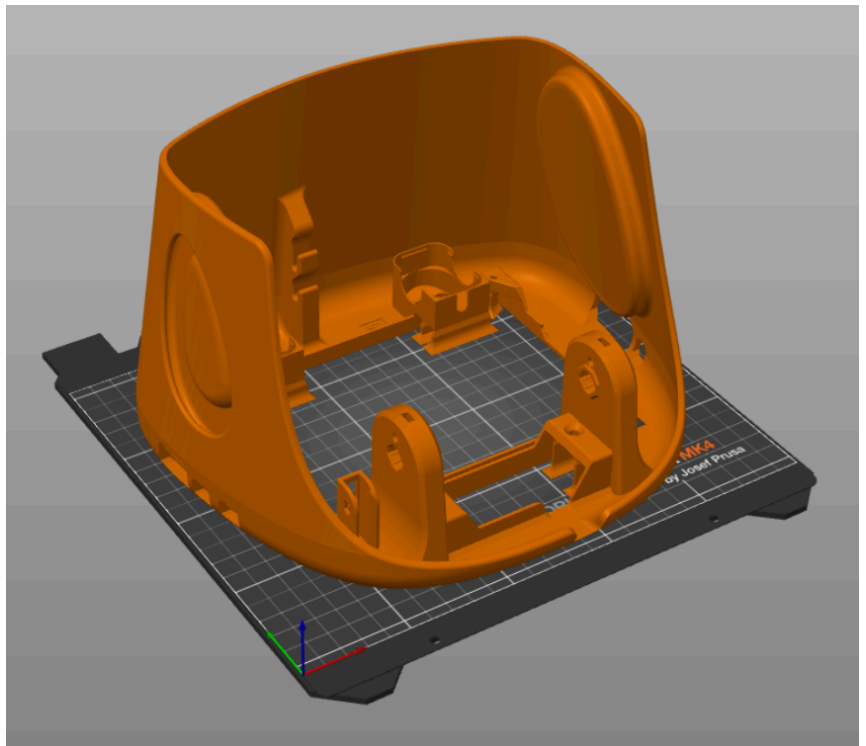
Suggested orientation



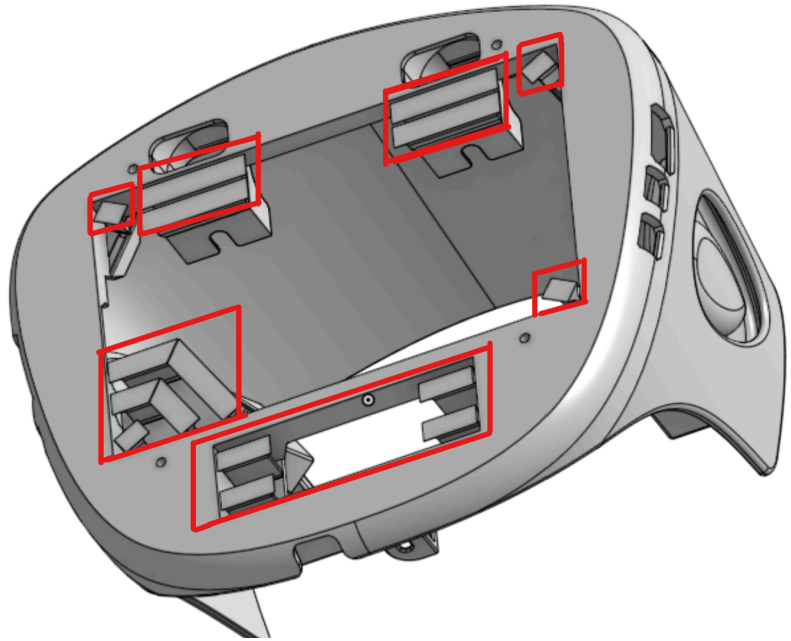
After printing processing	None
---------------------------	------

Suggested layer height	0.2 mm
Suggested infill percentage	20%-30%
Supports	None
Number of this part for one arm Pib	1
Number of this part for two arm Pib	1
Mass – (Mass with supports)	320 g
Printing time	12h 20min

Suggested orientation

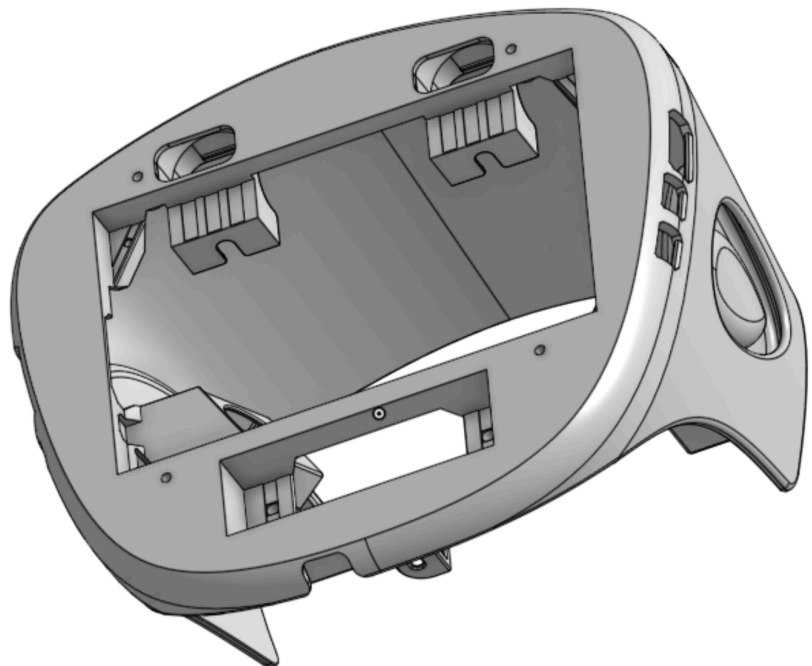


Remove print helpers



After printing
processing

Gently move small plastic parts highlighted until
breaking



Only needed in advanced neck (virtual sphere)